



Shreevinayakam®
ARADHYA

— — — — —
Rohaniya, Varanasi

*pure
living*



Varanasi

land of
eternal faith

ॐ सर्वेषां स्वस्तिर्भवतु ।
सर्वेषां शान्तिर्भवतु ।
सर्वेषां पूर्णंभवतु ।
सर्वेषां मङ्गलंभवतु ।
ॐ शान्तिः शान्तिः शान्तिः ॥



ShreeVinayakam Aradhya is located in Varanasi, the sacred city where the holy river Ganga touches the plains. The salubrious climate, the holy vibes in the air, the soul purifying soil is inviting to one and all. Famous for its Ghats, a holy dip here is believed to purify the body and soul. It is here where millions of devotees from all over the world visit for a holy bath in the Ganga to reclaim their spiritual well-being.

Aradhya is a favourite destination for those seeking a healthy, spiritual environment while retaining their luxurious lifestyle.

blissful life
*spiritual
sanctuary*

Shreevinayakam Aradhya is inspired by the clarity, transparency, fluidity, sparkle and the purity of Ganga. It is our loving tribute to the Ganga River and a respectful bow to the city of Varanasi which offers you the luxury of soothing and peaceful environs.

The inspiration behind Aradhya to elevate your living by experiencing a unique yet perfectly balanced fusion of the material comforts of the West and the spiritual well-being of the East. It is the perfect destination for those seeking a healthy, spiritual yet urban lifestyle in a safe, sacred environment.

The complex offers 2 & 3 BHK ultra luxurious apartments for those who are looking for living in style. It is an elegantly designed residential project with all ultra modern amenities.

Here, everyday you find life in its best form pampering itself with fascinating features and amazing lifestyle. The place offers ample open space and uninterrupted greenery which is almost a forgotten feature in today's context.



*External
facilities*

Sports

- Jogging Track
- Open Badminton Court

Entertainment

- Club House
- Indoor Games
- Children's Play House

Health

- Gymnasium
- Terrace garden with Open Yoga Center

Security & Safety

- Guard Room
- Power Backup for Lift & Common Area
- Round the Clock Security System with 24x7 CCTV

Eco Friendly Systems

- Sewage Treatment Plant
- Rain Water Harvesting
- Fire Fighting System
- Solar Panels for Common Area

Nature & Landscapes

- Landscape Garden

Add on Amenities

- Stilt + Double Basement parking
- 3 Elevators (Two - Six Passenger and One Stretcher)
- Community Hall
- Power Backup through Genset in Common Area and Flats



a perfect
embodiment

ॐ सर्वेषां स्वस्तिर्भवतु ।

Shreevinayakam Aradhya offers the best of facilities and lavish apartments that exude a quiet sense of luxury and is located at Varanasi's strategic location. The project features efficiently designed towers complimented with the latest technology and enveloped by greenery.

The balance of nature with modern living is evident at a glance. Experience grandeur right from the time you step into the complex. With so much luxury inside, you still won't be able to overlook the greenery outside. Submerge yourself in comfort amidst nature's beauty.

Welcome to the future. Welcome to Aradhya.





perfection

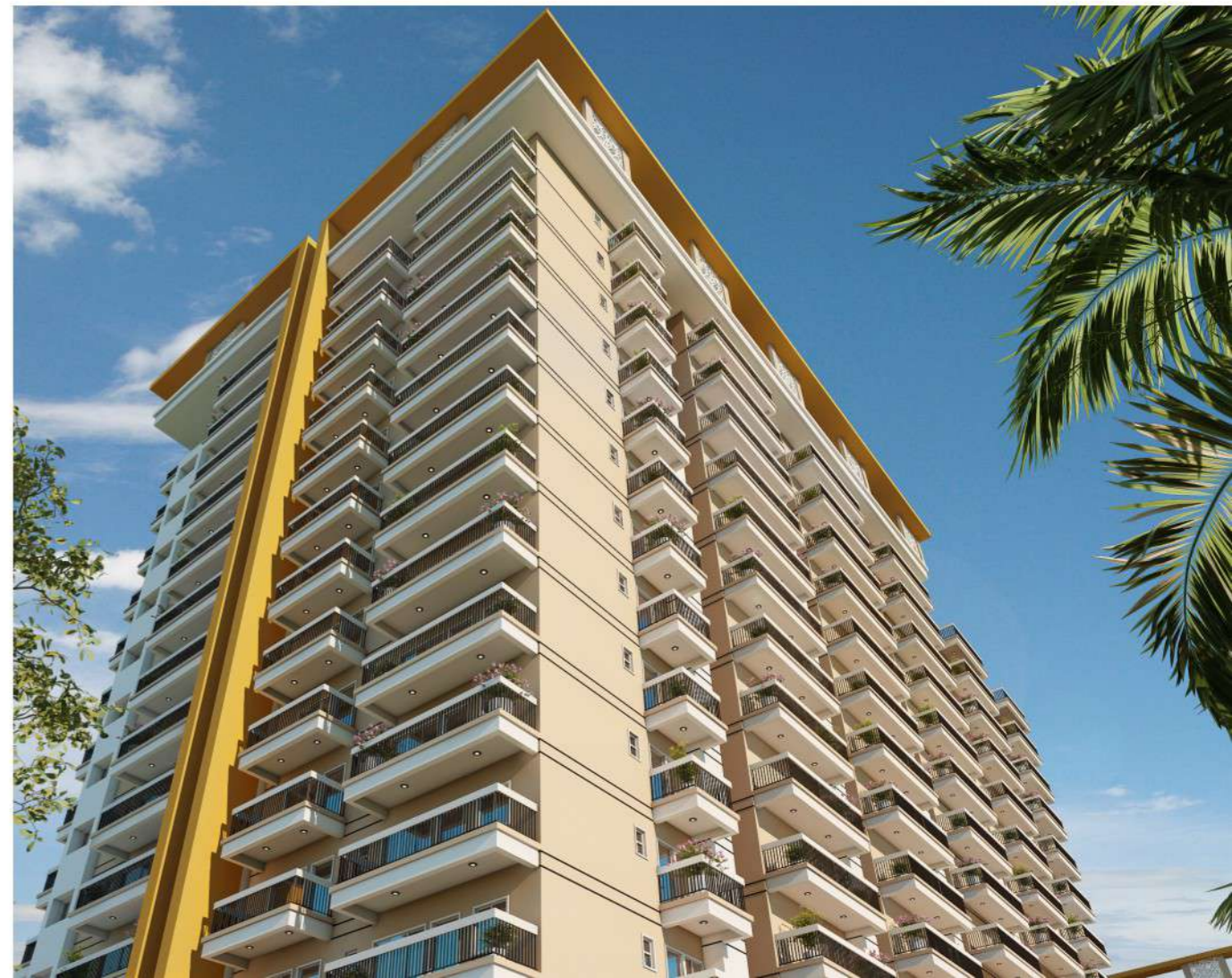
from the sky

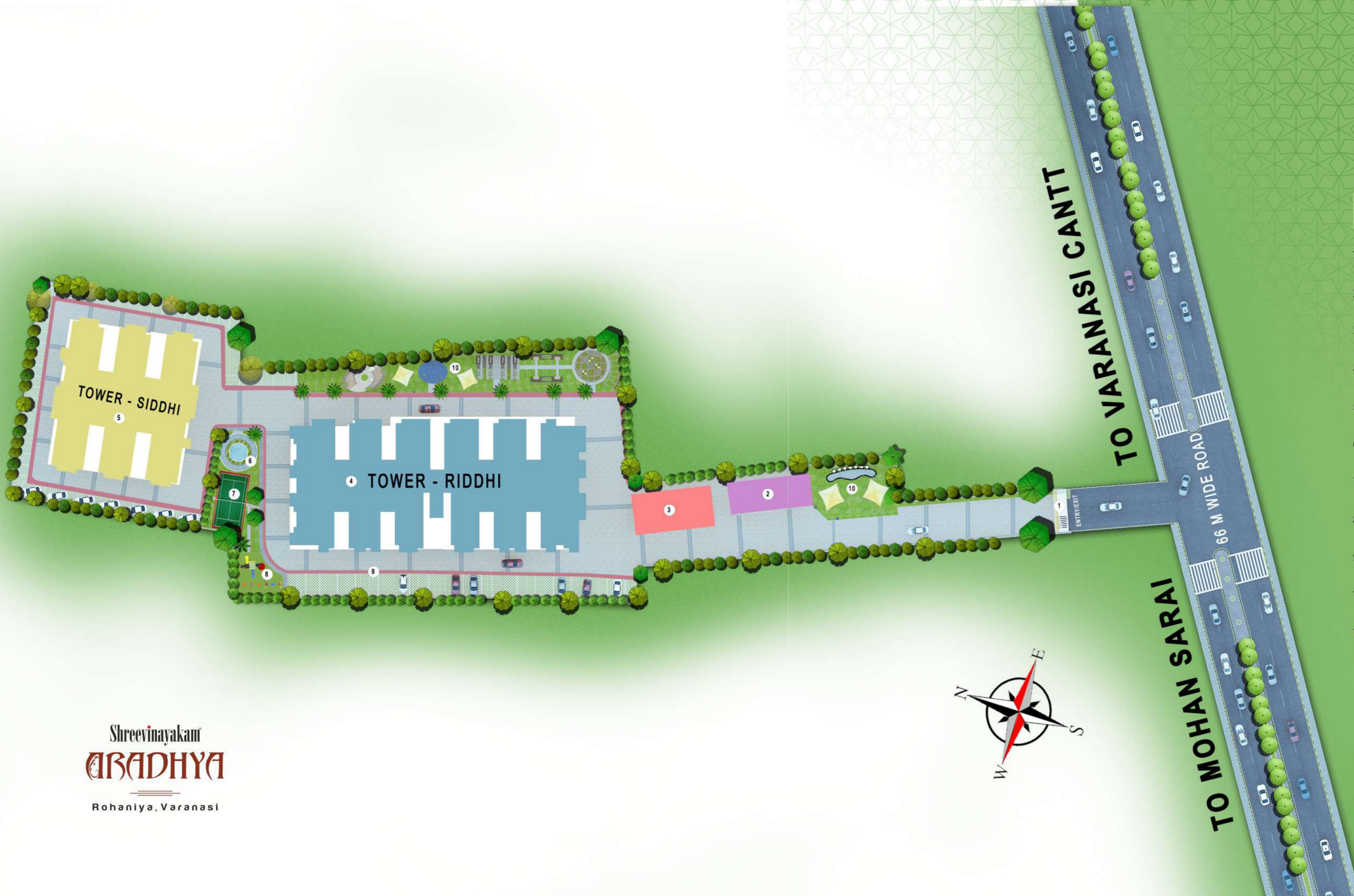


one place
many moments



experience *complete satisfaction*





LEGEND

- 1. Entry Gate
- 2. Commercial
- 3. Club
- 4. Tower-RIDDHI
- 5. Tower- SIDDHI
- 6. Seating Area
- 7. Badminton Court
- 8. Kids Play Area
- 9. Jogging Track
- 10. Park Area
- 11. Senior Citizen Zone

Contributing to the
responsible lifestyle

सर्वेषां शान्तिर्भवतु ।



THE GREEN EFFECT

Shreevinayakam Aradhy blends in perfectly with the surroundings at Rohaniya, helping residents benefit from cleaner air and lesser noise pollution. Come soak in an environment removed from the chaos of Varanasi, right in the heart of Varanasi.

- Pavilions With Water Cascades
- Landscaped Gardens And Courtyards
- Trees And Foliage
- Open Areas
- Gazebo Areas



PEACE OF MIND

All homes at Shreevinayakam Aradhy have a compact and utilitarian plan that implements the latest contemporary design. Adding functionality to elegant aesthetics, design at Aradhy is simple, yet stylish.

The safety features in Aradhy are meticulously engineered. The complex come pre-equipped with Hi-Tech Security and Surveillance System.

Facilities at Aradhy, a plush lifestyle comes with multiple choices.

graceful indulgence

सर्वेषां पूर्णभवतु ।

SPORTS

- Jogging Track
- Open Badminton Court
- Kids Play Area

ENTERTAINMENT

- Club House
- Indoor Games

HEALTH

- Gymnasium
- Senior Citizen Area

ECO FRIENDLY SYSTEMS

- Sewage Treatment Plant
- Rain Water Harvesting
- Fire Fighting System
- Solar Power System for Common Area



JOGGING TRACK



YOGA LAWNS



the life within



BADMINTON COURT

rejuvenate your happiness

grand lifestyle at clubhouse

The clubhouse within the premises is a large recreation centre which has an impressive range of indoor games and leisurely activities. It can be accessed by the guests conditionally.

- Gymnasium
- Indoor Games
- Kids Play Area
- Community Hall



CONVENIENCE STORE



CHILDREN PARK



SENIOR CITIZEN PARK



GYMNASIUM



TABLE TENNIS



BILLIARDS



Awe-inspiring lines, colours, shapes and texture define the architecture of Shreevinayakam Aradhya. From playfulness to abundant emotions, the design of Mulberry Heights convey meaning in every brick and zone. We have created an architectural masterpiece just for you.



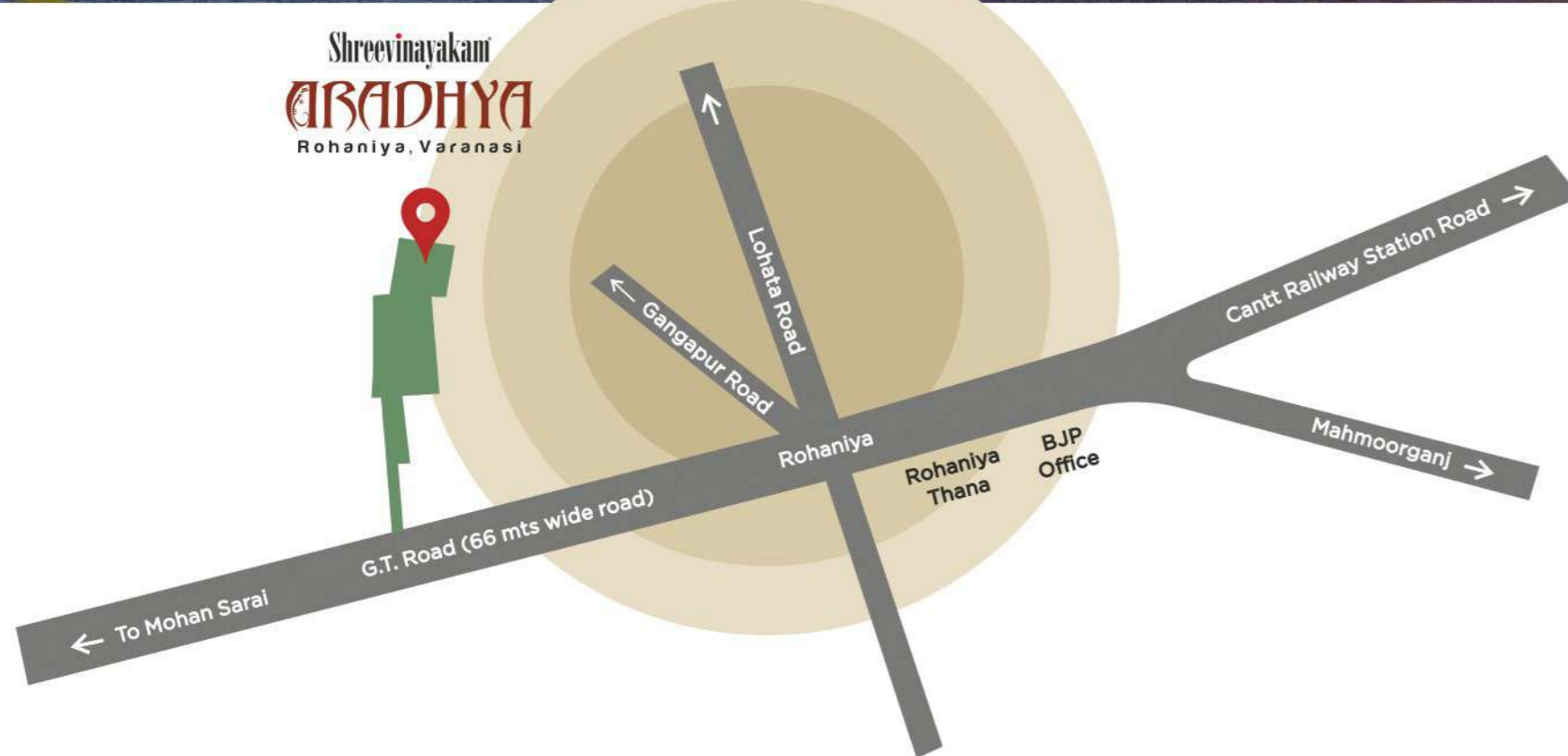
the perfect *design of life*





a location to
appreciate

Shreevinayakam
ARADHYA
Rohaniya, Varanasi



MAJOR DISTANCES

Banaras Railway Station	Cantt Railway Station	Anant Hospital	St John's School	Airport	Ring Road	Kashi Vishwanath Temple	BHU	Jagran Public School
➤ 6.1 km ➤ 14 min	➤ 8 km ➤ 20 min	➤ 650 mts ➤ 2 min	➤ 3.8 km ➤ 8 min	➤ 26 km ➤ 40 min	➤ 11 km ➤ 16 min	➤ 12 km ➤ 40 min	➤ 8 km ➤ 20 min	➤ 2.8 km ➤ 5 min

specification

सर्वेषां मङ्गलं भवतु ।

STRUCTURE

Earthquake resistant RCC framed structure designed by qualified structural engineer.
Fully Ventilated Flats.
Anti-termite treatment at foundation level & Brick Coba Treatment for Heat Reduction.

EXTERNAL FINISHES

Weather Coat Paint.

LIVING/DINNING/LOBBY

Floor: Good Quality Vitrified tiles.
Walls & Ceiling: POP base with Emulsion.

MASTER BED ROOM

Floor: Good Quality Vitrified tiles.
Walls & Ceiling: POP base with Emulsion.

KITCHEN

Floor: Ceramic Tiles (Anti Skid).
Walls: Designer Ceramic tiles upto 2' above counter, POP base with Emulsion in the remaining area.
Counter: Lower Unit modular with Granite Top.
CP Fittings/Fixtures: Jaquar/Parryware/Ess Ess/Grohe stainless steel sink, power point for fridge, chimney, mixer grinder, water purifier etc.

WINDOWS

2 Track UPVC window with Good quality Indian Profile.

FIRE SAFETY

Fire safety provision to be installed for the safety on each floor of the building.

TOILET

Floor: Anti-Skid Ceramic tiles.
Walls: Designer Ceramic tiles dado upto 7'0" height and POP base with emulsion in the remaining area.
CP Fittings/Fixtures: Jaquar/Parryware/Ess Ess/Grohe/equivalent fittings.
Sanitary Ware: Parryware/Cera/Hindware/equivalent in white or off white color fittings.
Ceiling: POP base with Emulsion.

BALCONY

Floor: Anti-skid Ceramic tiles.
Walls: Weather coat paint.
Ceiling: POP base with Emulsion.

DOOR

Painted hardwood frame with Century/equivalent moulded doors, main entrance door and bedroom door with Godrej/Dorset mortice lock.

ELECTRIC WORK

Copper wire, modular switches & sockets of Legrand or equivalent. AC Point with wiring in drawing, dinning and bedrooms.

STAIRS

Steel railing with granite steps.

COMMON PASSAGE

Marble Flooring on Common passage area.

UTILITY

Balcony having inlet - outlet provision for washing machine and utensil washing.



VISION

We are driven to be the Legends of Real Estate Sector in contemporary India through customer satisfaction and bringers of the joy to many for whom we build their Homes.

MISSION

Our Mission is to realize our Vision by working towards the same and practicing dedication and commitment in every project keeping customer satisfaction as the primary standard of our true progress.

PHILOSOPHY

Our project management and execution philosophy is:

- Create detail schedule and resources plan to meet project's objective.
- Communicate clearly with all project stakeholders.
- Track project progress and fine tune deviations.
- Supervise closely on quality of work done.
- Complete and commission the project on scheduled time.

enhancing the
quality of life

ॐ शान्तिः शान्तिः शान्तिः ॥

The promoters of SHAKUNTALAM INFRADEVELOPERS LTD, have been working in construction business since 2009. Over the years, the group has undertaken many challenging projects specially apartment and commercial buildings and accumulated skills, know-how and experiences in design and build solutions, project management services, building trades and related engineering works.

Today, SHAKUNTALAM INFRADEVELOPERS LTD takes on the role of main developer for small to medium size projects and performs project management services to coordinates specialist trades for commercial / residential projects. We also provide design inputs and engineering solutions & value addition services to our projects.

Our emphasis on clear communication and follow through procedures ensures that project's objectives are top priority in the planning and execution of all our processes.

Our aim to deliver the top notch real estate solutions and contributing through developments that make us proud of our contribution in empowering the citizens of this country.



scan the code to visit the address



Shakuntalam

Infradevelopers Ltd.

Corporate Office: B-38/47-K-8-H, Gokul Nagar Colony,
Mahmoorganj, Varanasi (UP) - 221010

Site Address: Narur, Rohaniya, Varanasi (UP) - 221302

Contact: 9795456683, 9889187251, 9452209700

Email: shakuntlam.idpl09@gmail.com

Visit us at: www.shakuntalamidpl.in

RERA NUMBER

UPERERAPRJ423217

A MEMBER OF
CREDAI
Confederation of Real Estate
Developers Association of India
VARANASI

LOAN FACILITY AVAILABLE FROM ALL THE LEADING BANKS



DISCLAIMER: This advertisement is indicative in nature & may not constitute as an offer or invitation for the purpose of registration/booking/sale. Visual and other representations including amenities, specifications in this advertisement are purely conceptual/ artistic impressions/involves approximation/estimates and does not constitute a legal offering or binding. Actual could substantially differ from the above. The viewer/prospective buyer may seek all such information including sanctioned plans, approvals, development schedule, time of delivery, specifications, facilities & amenities, from the company in respect of the concerned project/phase that he/she may be interested in. before any such booking/registration, etc.